

*eldes*®



## **NEW GENERATION WIRELESS ALARM SYSTEMS**

PERFECT SOLUTIONS FOR SECURING YOUR PROPERTY





We are Lithuanian technology company that has been developing professional home security solutions **for over 12 years and our brand is represented in 70 countries.**

Our mission is to make installation easier for our clients by creating installer-friendly, intuitive and value-for-money products. We specialize in wireless security solutions - our latest products reach up to 3 km in open areas. It ensures fast and smooth functionality in premises up to 300 m<sup>2</sup>. Our goal is to become Your number one choice for installations.

## WHY CHOOSE US:



### INSTALLER-FRIENDLY SOLUTIONS

Our team constantly analyzes ideas and requirements of installers to turn them into a reality. Eldes Utility is intuitive and installer-friendly tool which boosts the installation time by 50%! Additionally, the software allows to remotely configure a security system, eliminating a need to be in the location.



### HIGH EUROPEAN QUALITY

High European quality is one of many reasons why installers all over the world choose us. All of our products are assembled in Lithuania. Before we send the products to our clients, we thoroughly test them to ensure long-term and smooth functionality.



### WIDE VARIETY OF PRODUCTS

With our range of products You will be able to offer various home security solutions and protect homes of the most demanding end-users. The newest alarm panels ESIM384 and Pitbull Alarm PRO can be expanded with our new generation wireless keypads, motion, temperature and flood sensors, sirens, door contacts etc. Our solutions will ensure the highest level of home security.

**Our security solutions meet CE and EN 50131 (Grade2) standards**

# INTRUSION ALARM PANEL

For apartments and small houses

## PITBULL ALARM PRO

Pitbull Alarm PRO is unique stand-alone system and it is better than ever - Pitbull Alarm PRO features extremely fast installation and configuration, breakthrough wireless range and can be easily connected to any monitoring station. Additionally, the solution has built-in temperature and motion sensors, wireless/GSM/GPRS modules so it does not require much space for installation.



### MAIN FEATURES

- 2x Nano SIM cards for maximized security
- Monitors up to 34 zones (16 wireless devices)
- Remote control
- Integrated motion sensor
- Wireless range up to 3km
- 50% faster installation
- 1 input, 1 output
- Audio indication via built-in buzzer





# INTRUSION ALARM PANEL

For large houses and business

## ESIM384

ESIM384 is flexible and powerful hybrid alarm panel which has built-in wireless/GSM/GPRS modules. In addition, ESIM384 has home automation features - control of outputs and scheduler with up to 16 different scenarios. PSTN and ethernet communication modules can be optionally integrated to expand the communication of ESIM384. Our professional alarm panel ESIM384 ensures the highest level of home and business security.



### MAIN FEATURES

- Monitors up to 144 wireless and wired zones (64 wireless devices)
- Compatible with any monitoring station
- Remote control
- 2x SIM cards for maximized security
- Integrated USB connection for configuration
- Wireless range up to 3km
- 50% faster installation



UP TO  
300 M<sup>2</sup>

NEW

**FREE**  
MOBILE APP  
FOR EVERYDAY  
USE

**FREE**

# NEW ELDES SECURITY MOBILE APPLICATION

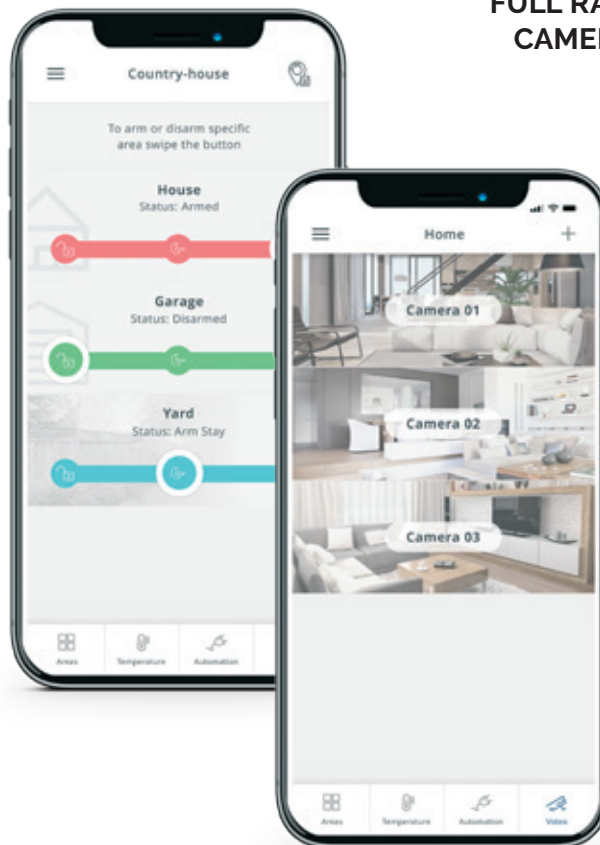
The Eldes Security mobile app is a personal security assistant on your phone. Arm and disarm a security system, check temperature and events, view live stream from home and control electrical appliances from anywhere in the world!



**FULL RANGE OF DAHUA IP CAMERAS SUPPORTED**

## FUNCTIONALITY:

- Arm/disarm security system
- Monitor temperature
- Remotely control electrical devices
- Push notifications by events
- Easy administration of users



## NEW VIDEO MONITORING FUNCTIONS:

- Live stream of home
- Camera-to-Zone assignment
- Full cameras control
- Screen capture & video recording on a phone
- Event history

Free mobile app



# KEYPADS

---



## WIRELESS TOUCHPAD EWKB5

Exceptional user interface, flexible installation and wide range of features.

- Professional wireless security
- Voice assistance (8 languages)
- User-friendly interface
- 4.3" TFT touch screen display
- Customizable menu
- Battery powered (up to 14 months)
- Wireless range up to 1000 m
- 50% faster installation

---

## WIRELESS LED KEYPAD EWKB4

Control the security system with push-button ease.

- LED indicator for visual guidance
- Status of zones display
- Customizable zone number indication
- Audio indication via built-in buzzer
- Battery life up to 4 years
- 50% faster installation



## WIRED KEYPAD EKB2

Attractive design meets carefully thought-out functionality.

- LCD graphic display
- Informs about temperature, GSM levels, zone status and system faults
- Touch sensitive keys
- Glass top

# WIRELESS SENSORS

---



Available colors:



## WIRELESS DOOR CONTACT & WINDOWS SENSOR EWD3

Senses vibration and measures temperature. Additionally, EWD3 can be used as transmitter for wired third party sensors.

- LED indication
- Additional wired zone for NO/NC, EOL and flood sensor
- Wireless range up to 3 km
- Battery life up to 5 years
- 50% faster installation

---

## WIRELESS MOTION DETECTOR EWP3

Pet-immune PIR detector with integrated temperature sensor.

- 90° detection coverage
- Pet-immune, up to 40 kg
- Wireless range up to 3 km
- Battery life up to 3 years
- 50% faster installation



---

## WIRELESS SMOKE SENSOR EWF1

Detects smoke before it bursts into flame. Interconnected alarm will notify all premises at once.

- Built-in LED indicator
- Integrated siren
- Photoelectrical sensor
- Lifetime up to 10 years
- Optional versions - EWF1CO with carbon monoxide sensor and Fumerex - stand-alone smoke and carbon monoxide sensor



# SIRENS AND ACCESSORIES

---



## WIRELESS OUTDOOR SIREN EWS2

- Built-in speaker
  - Sound level: 104dB
  - Integrated LED indicator
- 

## WIRELESS INDOOR SIREN EWS3

- 2 built-in speakers
- 3 LED indicators
- LED and sound indication differs depending on the type of alarm (fire alarm, intrusion alarm)
- Sound level: 90 dB



## WIRELESS POWER SOCKET EWM1

Automate and remotely control household equipment.

- View electricity consumption of home
  - Control electrical appliances via keyfob or smart phone
  - Fault indication and protection
  - Compatible with any 230V electrical appliance
  - Power consumption less than 1W
- 

## KEYFOB EWK2

Control home at push of button.

- Customizable buttons
- Visual LED indicator
- Built-in buzzer's sound
- Optional EWK2 version - panic button EWK2A
- Alarm panel control



# GATE CONTROLLER ESIM320

ESIM320 is a remote GSM controller designed to control gates, barriers and garage doors via SMS, mobile application or widget. In addition, remotely administrate user database via Eldes Cloud or SMS.



2G 3G

AVAILABLE ON:



Android



iOS



## MAIN FEATURES

- Up to 2000 unique users
- Up to 5 administrators
- Integrated GSM/GPRS module
- User phone number validity limitation (by data, number of rings)
- 2 outputs, 3 inputs
- Customizable alarm texts

# UNIVERSAL 2G/3G COMMUNICATOR ET083

Connect almost any alarm panel to monitoring station or add extra communication channel for mobile security.

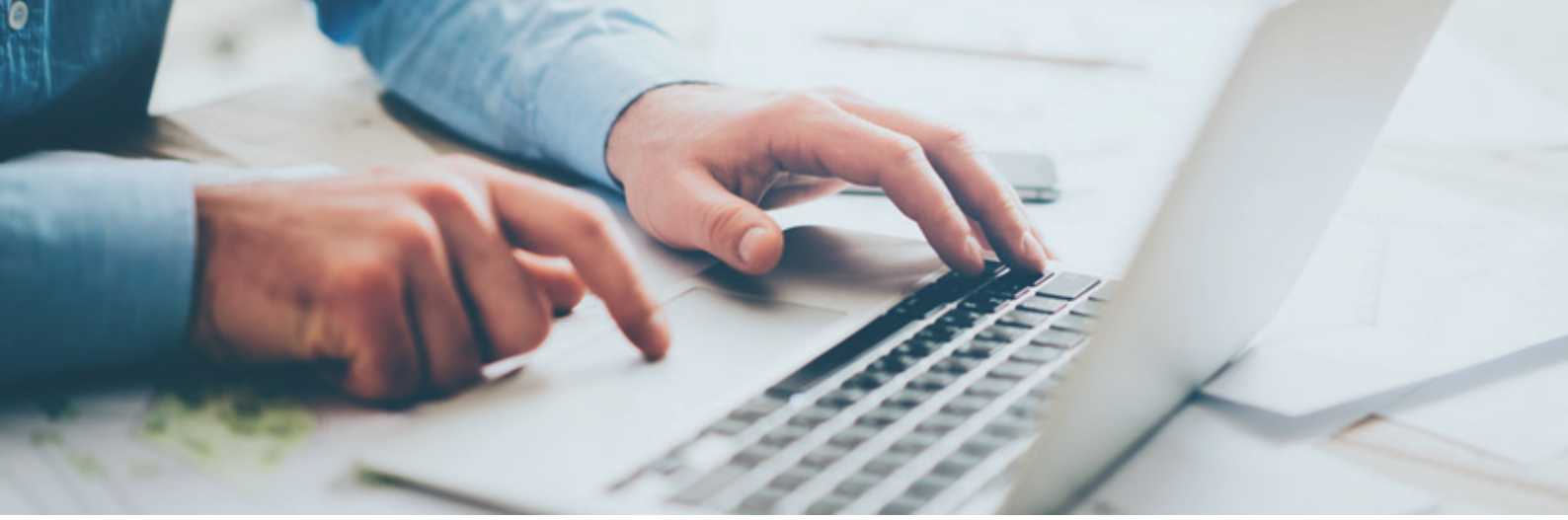


## MAIN FEATURES

- Supported protocols: EGR100, Ademco Contact ID, SIA IP and Kronos (GRPS).
- Firmware Over-The-Air updates
- Remote configuration of communicator
- Remote arm/disarm of the upgraded alarm panel
- Up to 5 users
- Provides communication via LAN/GSM/GPRS



2G 3G



## ELDES UTILITY



Eldes Utility is a software designed to fully configure (locally or remotely), install and export/import settings for Eldes alarm panels: ESIM384, ESIM364, Pitbull Alarm, Pitbull Alarm PRO and for communicator ET083.

The user-friendly tool will help to save Your time - exclusive technology will boost the installation time by 50%! Eldes Utility tool is available in 9 languages.

### AVAILABLE ON:



Windows



MAC OS X



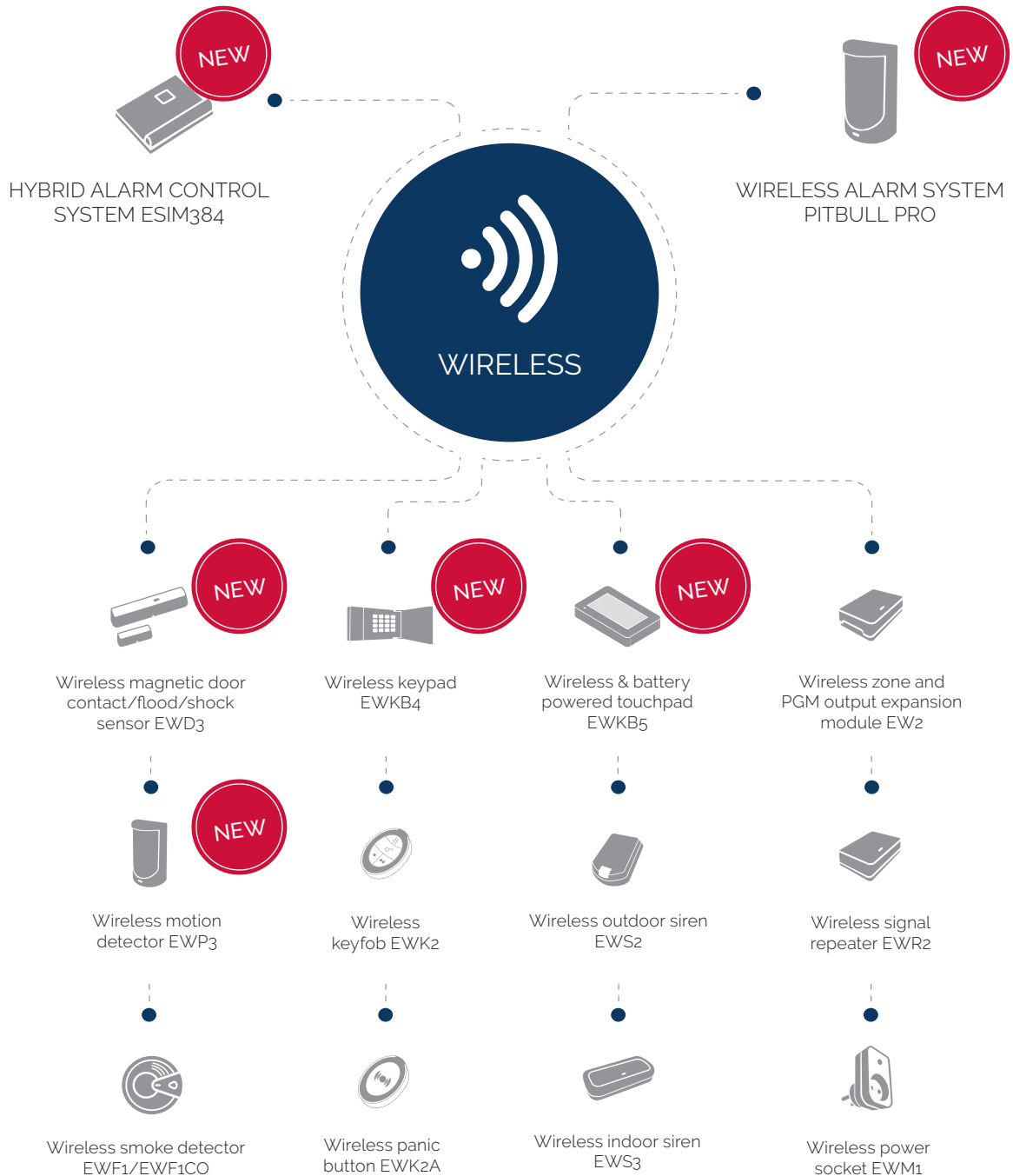
Android

Eldes Utility is a brand new software and a lot of our solutions are already installed using the tool.

We constantly communicate with installers and analyze their feedback to improve the Utility tool even more!



# NEW GENERATION WIRELESS ALARM SYSTEMS



For more information please visit our web site: [www.eldesalarms.com](http://www.eldesalarms.com)

Created and produced in EU

